

## SL Bimetal Bushing

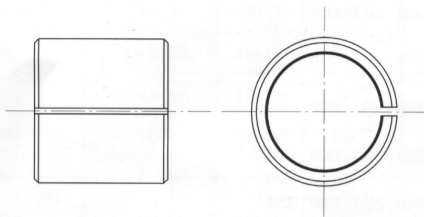
This kind of bush is wrapped by bimetal strip, the strip is based on steel backing and incorporated with bronzed surface. The bronze layer is sintered twice under high temperature and calendered firmly onto the steel strip.

### Alloy Compositiongs

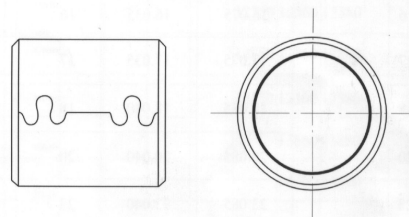
Item	Alloy Type	Cu	Pb	Sn	Zn
SL800	$\text{Cu}_{80}\text{Pb}_{10}\text{S}_{10}$	80	10	10	/
SL750	$\text{Cu}_{70}\text{Pb}_{10}$	75	24	1	/
SL720	$\text{Cu}_{75}\text{Pb}_{22}\text{S}_3$	72	24	4	/

### 搭扣形式 Joint Types

直縫搭扣 Straight Joint



蝶形搭扣 Inter Leaking Joint



### SL型雙金屬軸套的油槽油穴形式 Types of Lubricating Grooves

